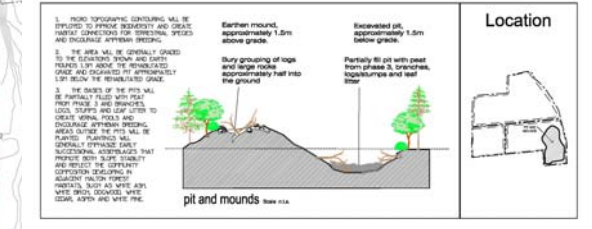
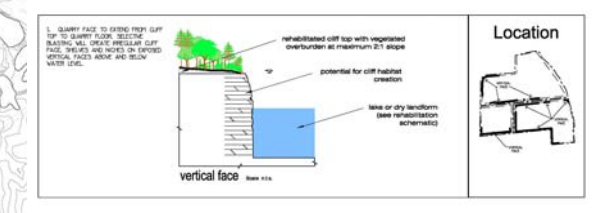
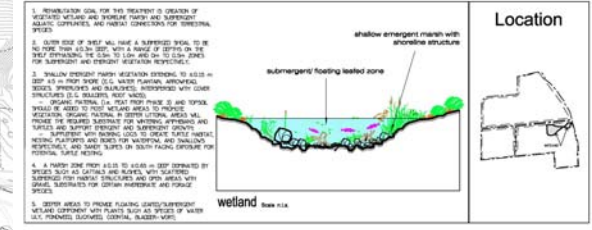
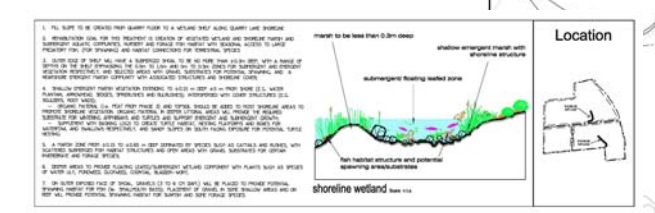
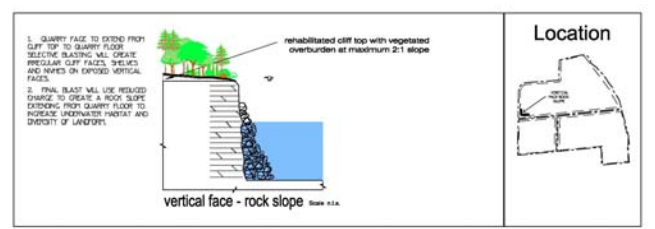
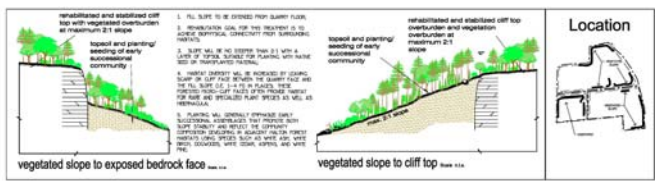
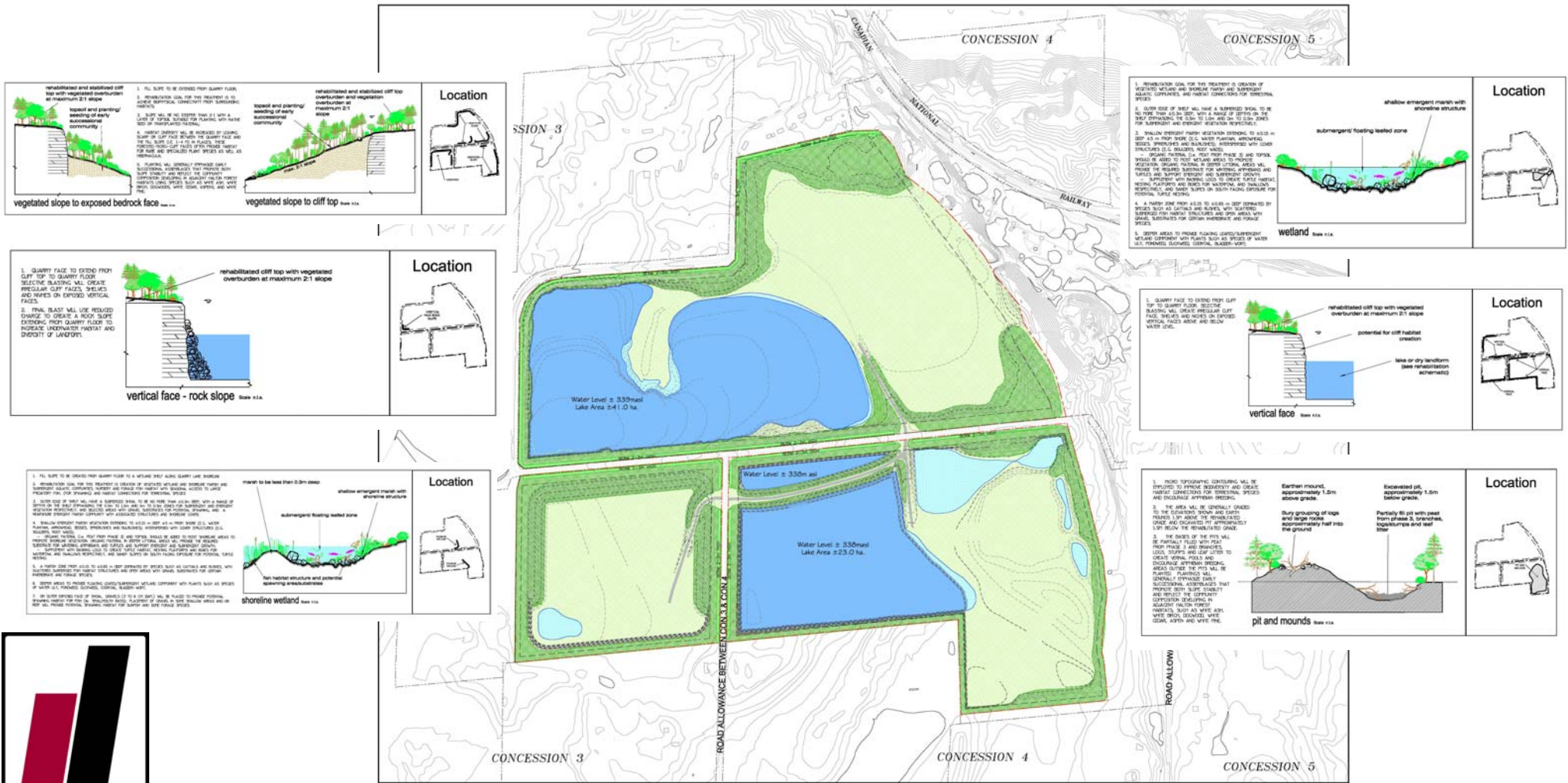


Existing Quarry – Proposed Revisions to Rehabilitation Plan – Subject to MNR Approval



Existing Quarry – Rehabilitation Next Steps

Dufferin will focus its next rehabilitation efforts in the east half of Phase 2. Grading will take approximately 1.5 - 2 years following MNR approval

The rehabilitation goal is to create a naturalized landscape to expand the Escarpment Corridor



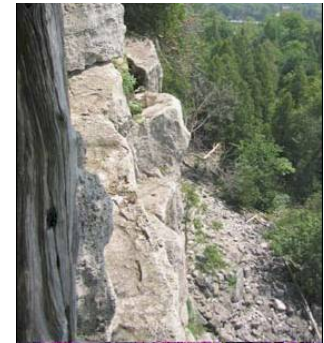
Slopes will be backfilled and forested to create a talus slope



Rock crevasses in talus slopes create refuges for many animals



Wetlands will be created



Some areas of exposed cliff face will remain



The floor of the quarry will involve microtopographic contouring. Plant and tree species are planted in pits or on mounds based on their moisture tolerance. Small wetlands and vernal pools will be created on the quarry floor.



ST. LAWRENCE
CEMENT